



# Phase One Firmware Updater user guide

This guide is design to assist you with installation and operation of Phase One Firmware Updater application for loading new firmware versions to the iX cameras  
As new features are introduce, we change the downloadable version of this document, which is available from the Downloads section of <http://industrial.phaseone.com>.

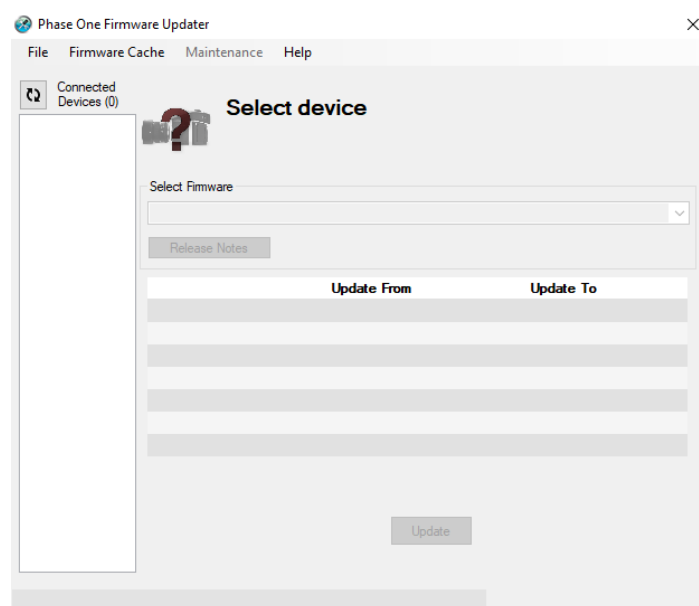
## Firmware Updater

The Firmware Updater does not in itself contain any firmware – special firmware packages (FWP file) are to be used by direct drag and drop into the updater. Those packages can be download from the download section of [industrial.phaseone.com](http://industrial.phaseone.com). Also (with near future firmware version releases) it will check online and fetch the latest available firmware packages for your device.

## Firmware Updater workflow

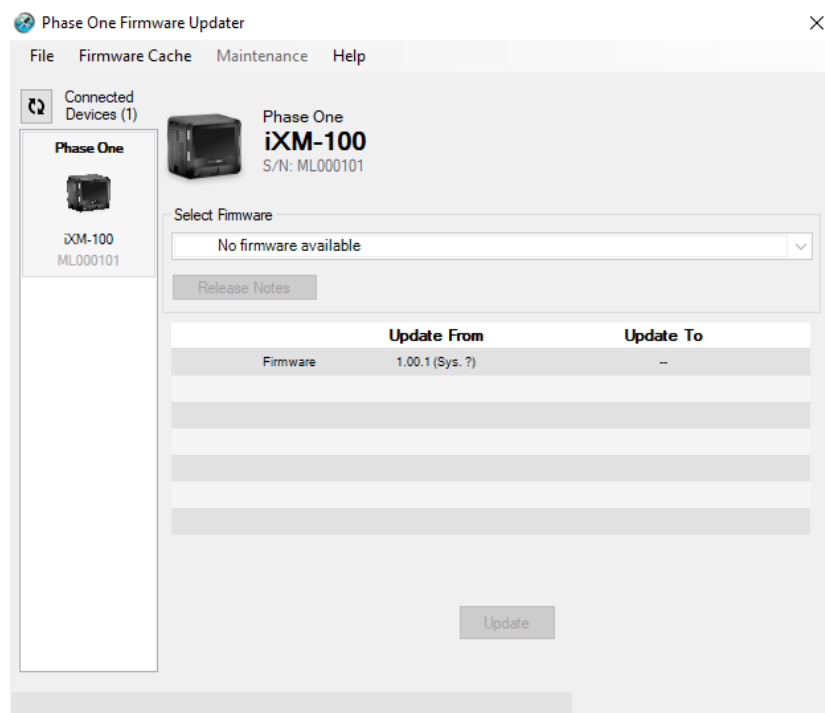
The Firmware Updater installer can be download from the download section of Phase One Industrial web site – [here](#) (PC version).

After downloading and installing the application, activate it

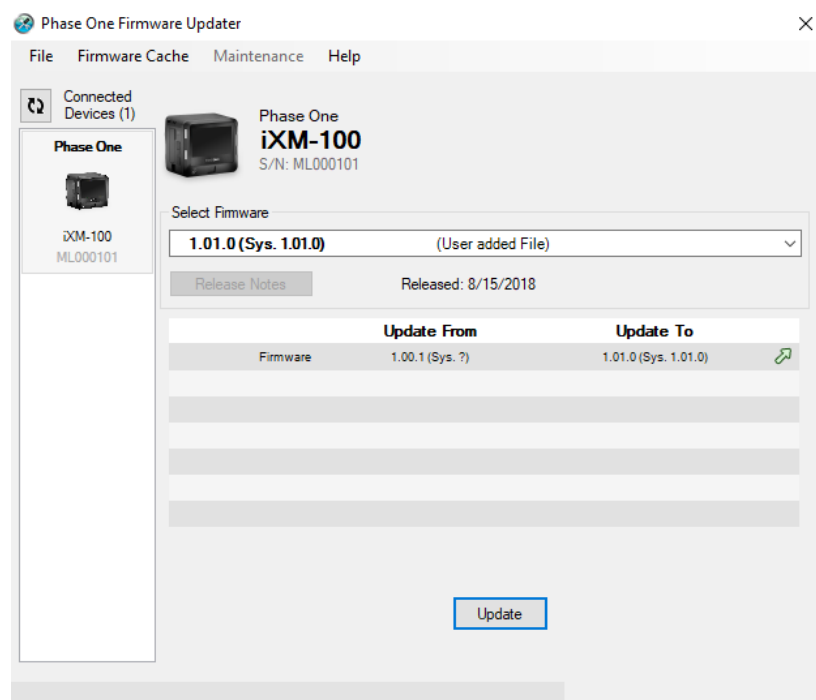


Connect the iX camera to power and to host (using USB3 cable for example).

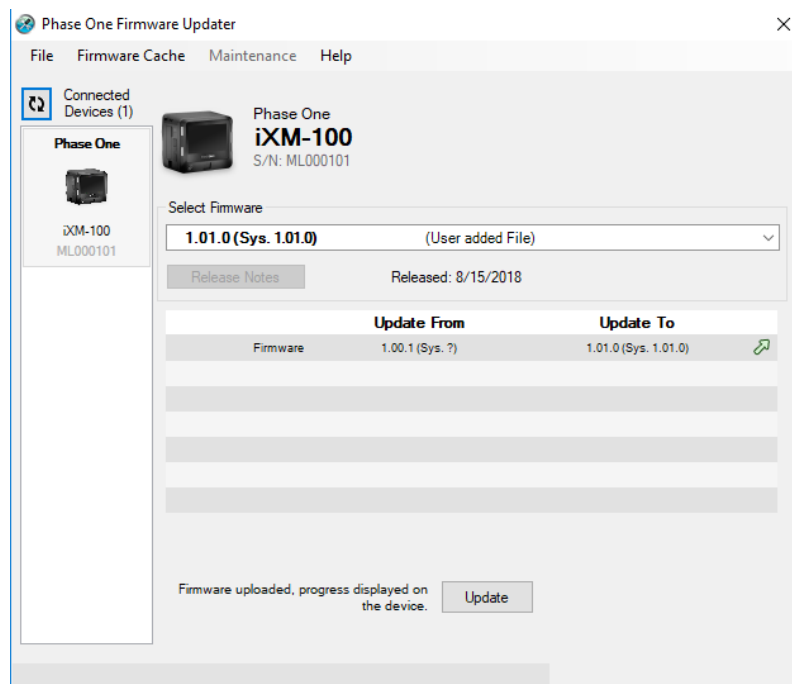
When the iX camera finish the power-up sequence, the Firmware Updater will recognize the camera and present the current firmware version loaded into the iXM camera



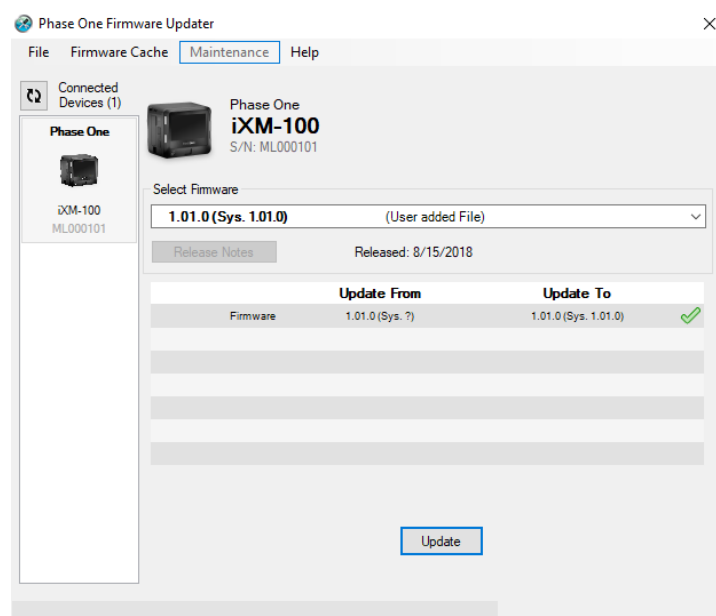
If this firmware version is to be update, drag and drop the relevant FWP file. If the file is compatible with the iXM camera, the Firmware Updater will indicate it



Press Update button



The camera will start flashing both 2 left LEDs in orange for few minutes. When it finish, it will re-start the iXM camera and the Firmware updater will show the new firmware version loaded into the iXM camera



**Note:** The Firmware Update process may take up to 6 minutes and all LEDs might glow in bright blue. This is normal flow of the update process

Quit the application.

**Note:** iXM camera can only connect to one application at a time (Firmware Updater, iX Capture or Capture One)